

# APO System Requirements

## From Evaluation To Production

# Components of an APO System



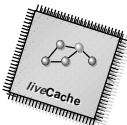
*Presentation Server*: special APO GUI (Win 95, NT)



*Application Server (AP)*: currently only NT/Unix  
can be identical with database server



*Database Server (DB)*: currently only NT/Unix, Oracle 8.0



*liveCache*: currently only NT, constrained by main memory  
can be installed on database server



*Optimisation Server*: currently only NT, constrained by CPU  
can be installed on presentation server

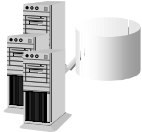
# Possible System Sizes



*Micro System:* all on one box (currently only under NT)



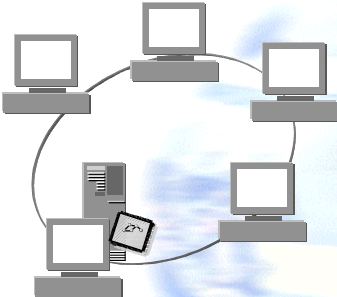
*Small System:* AP and DB server on one box,  
live cache separate, optimisation server on front-ends



*Big System:* several AP servers, DB server, live cache(s) separate,  
optimisation servers on high end machines

# Evaluation System

APO only, 1-5 users



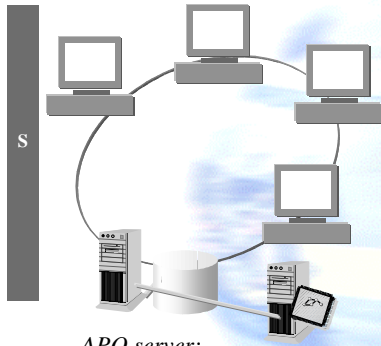
*Front-ends:*  
APO Gui / Optimiser  
1 processor Pentium 300 Mhz  
hard disk: 2 GB  
main memory: 32 MB

*APO server:*  
APO Gui / AP / DB server / liveCache / Optimiser  
1 processor Pentium 300 Mhz  
hard disk: 17 GB  
main memory: 2GB

*Remark:* two systems might be combined on one set of hardware

## Small System

only APO considered, 5-30 users



**APO server:**  
AP / DB server  
2 processor Pentium 300 Mhz  
hard disk: 20 GB  
main memory: 768MB

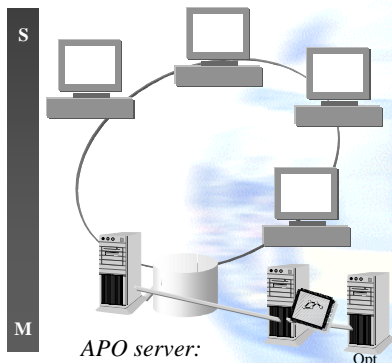
**Front-ends:**  
APO Gui / Optimiser  
1 processor Pentium 300 Mhz  
hard disk: 2 GB  
main memory: 32 MB

**liveCache:**  
liveCache  
1 processor Pentium 300 Mhz  
hard disk: 2 GB  
main memory: 2GB

*Remark:* two systems might still be combined on one set of hardware

## Medium System

only APO considered, 30-50 users



**APO server:**  
AP / DB server  
2 processor Pentium 300 Mhz  
hard disk: >=40 GB  
main memory: 2 GB

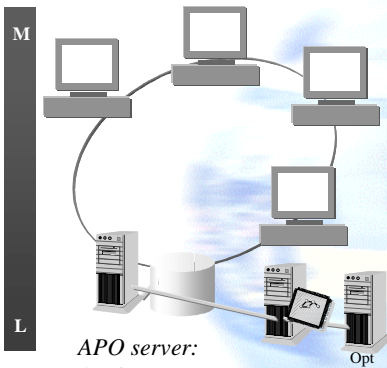
**Front-ends:**  
APO Gui (Optimiser)  
1 processor Pentium 200 Mhz (300 Mhz)  
hard disk: 2 GB  
main memory: 32 MB

**Optimiser:**  
Optimiser  
1 processor Pentium 450 Mhz  
hard disk: 2 GB  
main memory: 32 MB

**liveCache:**  
liveCache  
1 processor Pentium 300 Mhz  
hard disk: 2 GB  
main memory: 2 GB

# Big System

only APO considered, >50 users



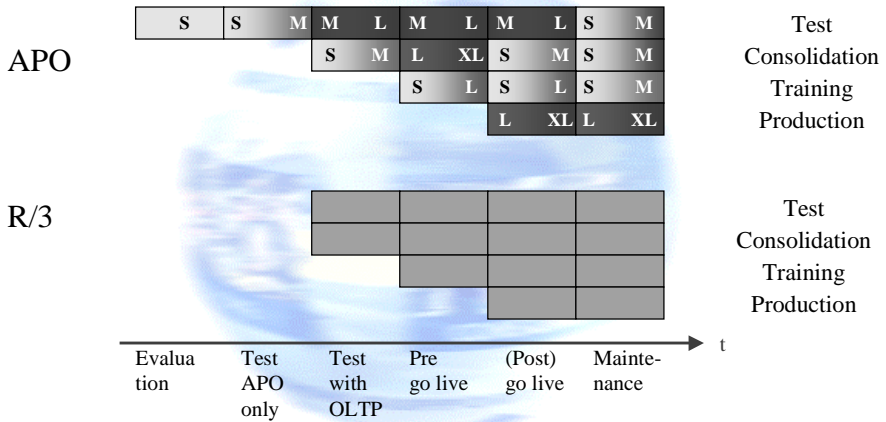
*Front-ends:*  
 APO Gui  
 1 processor Pentium 200 Mhz  
 hard disk: 2 GB  
 main memory: 32 MB

*Optimiser(s):*  
 Optimiser  
 1 processor Pentium 450 Mhz  
 hard disk: 2 GB  
 main memory: 32 MB

*APO server:*  
 AP / DB server  
 4 processor Pentium 450 Mhz  
 hard disk: >=50 GB  
 main memory: >2 GB

*liveCache:*  
 liveCache  
 x processor Pentium 300 Mhz  
 hard disk: 2 GB  
 main memory: >2 GB

# System Landscape during Project Life Cycle



## Project related Issues

- **Transport and Correction System**
  - OCX files, COM routines
  - logical transport link R/3 ↔ APO
- **Upgrades:**
  - liveCache / OCX files / COM routines