

Linking Documents with Web Templates



Summary

This article explains certain ways to link documents with our Web-Templates which is a useful way of attaching information with a query. When the enduser runs a query on web; he might wish to know how certain business KPIs are getting calculated or any similar scenario. An attached document can help in such cases.

Author: Manish Sharma

Company: Wipro Technologies

Created on: 09 December 2009

Author Bio



Manish Sharma is a SAP-BI Consultant in Wipro Technologies. He has around 3 years of experience in SAP BI. He has also worked in BI ABAP and BW-BPS.

Table of Contents

Introduction	3
Linking a SOLMAN Document with a Web-Template	3
Linking any Document with a Web-Template	8
Related Content.....	14
Disclaimer and Liability Notice.....	15

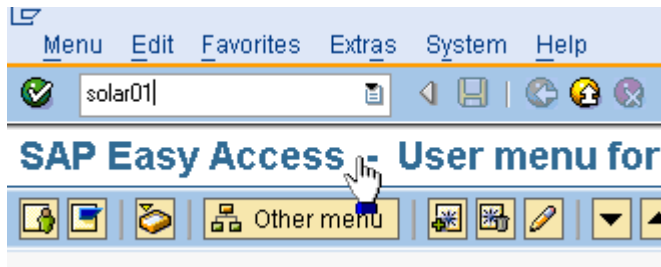
Introduction

A well managed project involves proper documentation of the product and most of the project documents are stored in SOLMAN i.e. Solution Manager. We shall first see how we can link a solman document with our web-templates so that they are available to the user at query runtime. In addition to this, in the second part of the article we shall see one more way of attaching a document with a web template.

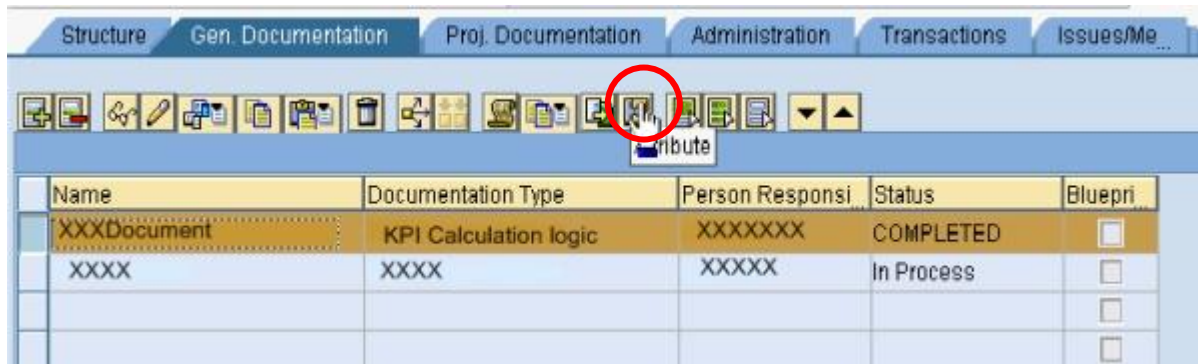
- Linking a SOLMAN document with Web-Template
- Linking any document with a Web-Template

Linking a SOLMAN Document with a Web-Template

Step-1 Open Solution Manager and go to the respective T-code where the document to be attached is kept.



Step-2 Select the Document and choose 'Attributes'.



Step-3 The below screen appears, click on generate Button.

Maintain Attributes

General Other Attributes Comments Link History Test Objects

Title XXX Document

Technical Name

Documentation Type KPI Calculation logic

Status COMPLETED

Priority Medium

Person Responsible XXXXXX

Language English

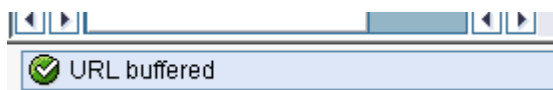
Folder XXXXX

Business Blueprint-Relevant

Keywords

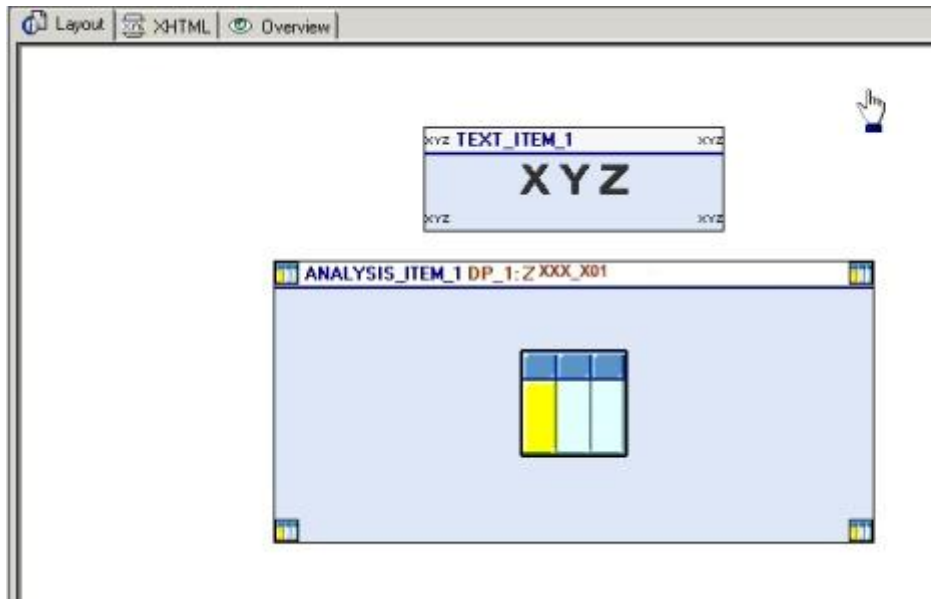
Check Generate X

Step-4 The Below message appears.

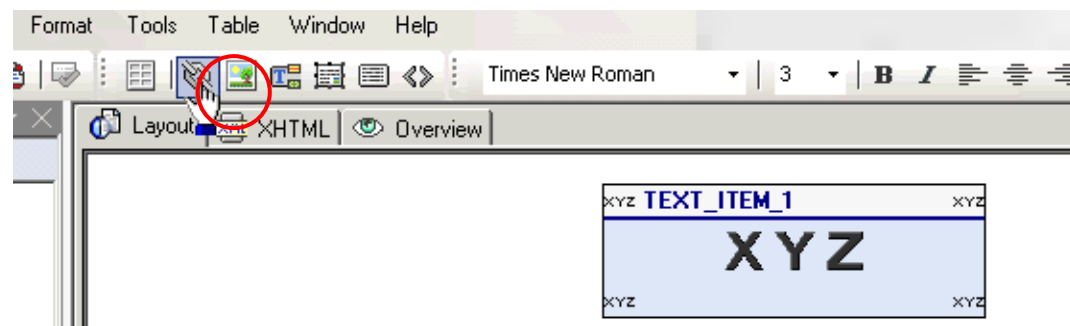


This means that the URL for the selected document has been copied to the clipboard. Open a word document and paste (CTRL + V) the URL, which will be required at a later stage.

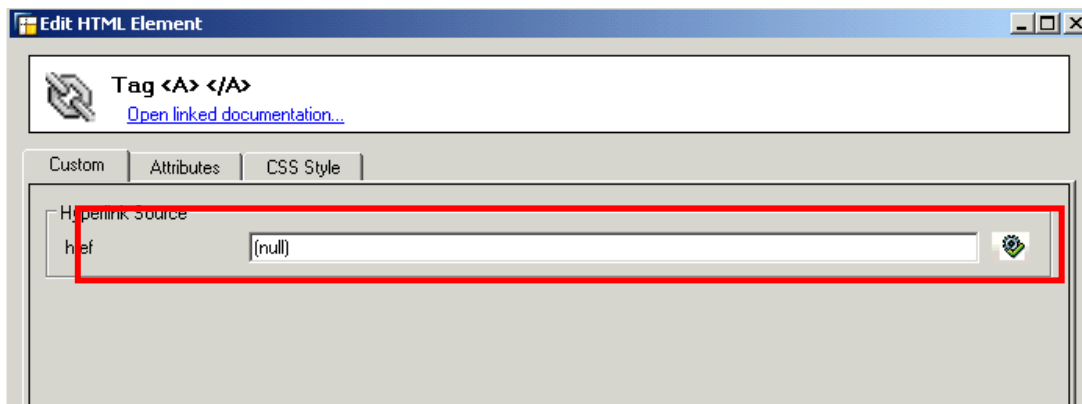
Step-5 Open your web-template in WAD.



Step-6 Click on the circled button for generating a hyperlink.

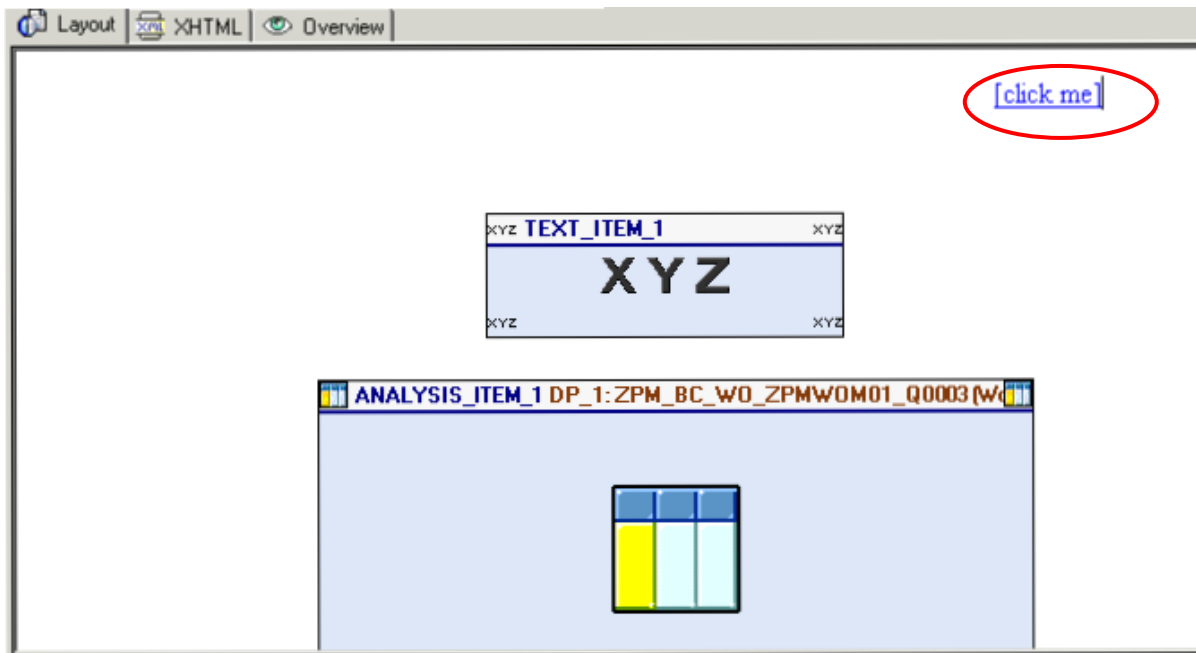


Step-7 The below screen pops up.

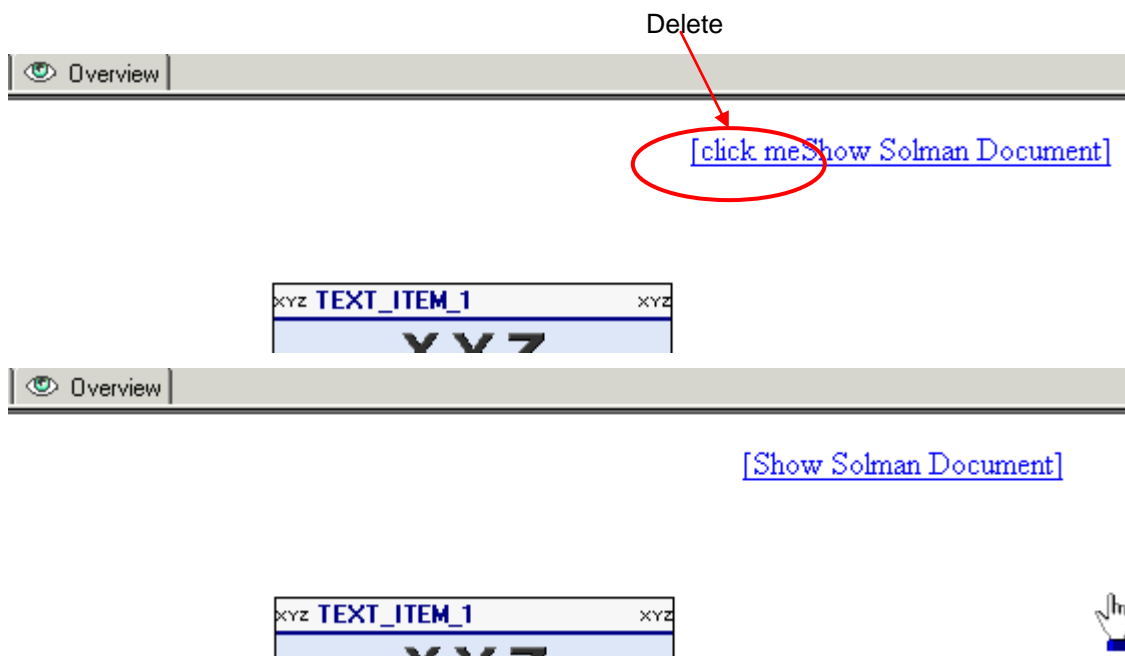


Step-8 Enter the URL copied in step 4 in the space provided in the above pop-up and click **OK**.

A hyperlink will be generated as shown.



Step-9 Edit the hyperlink text.



Step-10 Save your Web-Template and execute.

[\[Show Solman Document\]](#)

XXXXXXXX Analysis

XXX	XXX	XXX	XXX	XXX	XXX	XXX	XXX
EUR	EUR	EUR		EUR		EUR	
188.250,00	250,00	1.900,00				190.150,00	250
188.250,00	250,00	1.900,00				190.150,00	250

Step-11 Click on the hyperlink (open in new window).

[\[Show Solman Document\]](#)



Step-12 You will get a Log on pop-up, enter your SOLMAN userid and password.

User

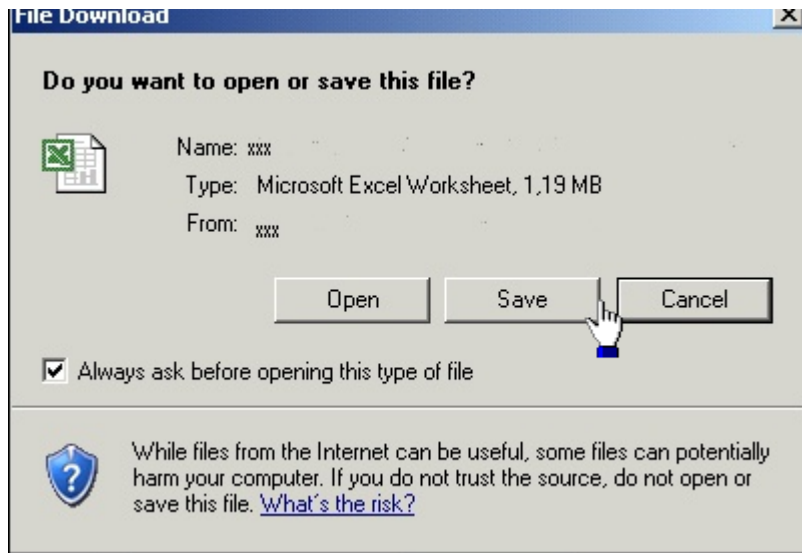
Password

[Change Password](#)

User name:

Password:

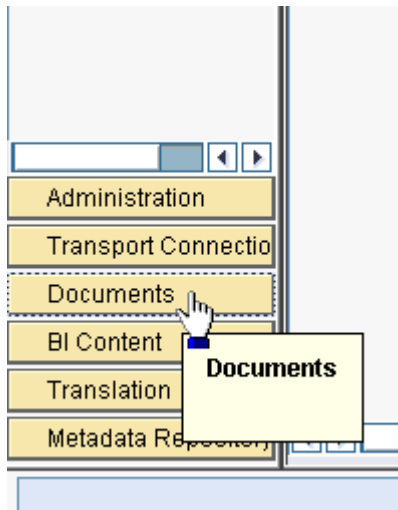
Step-13 You will get the below pop-up. Open or save the document as per your need.



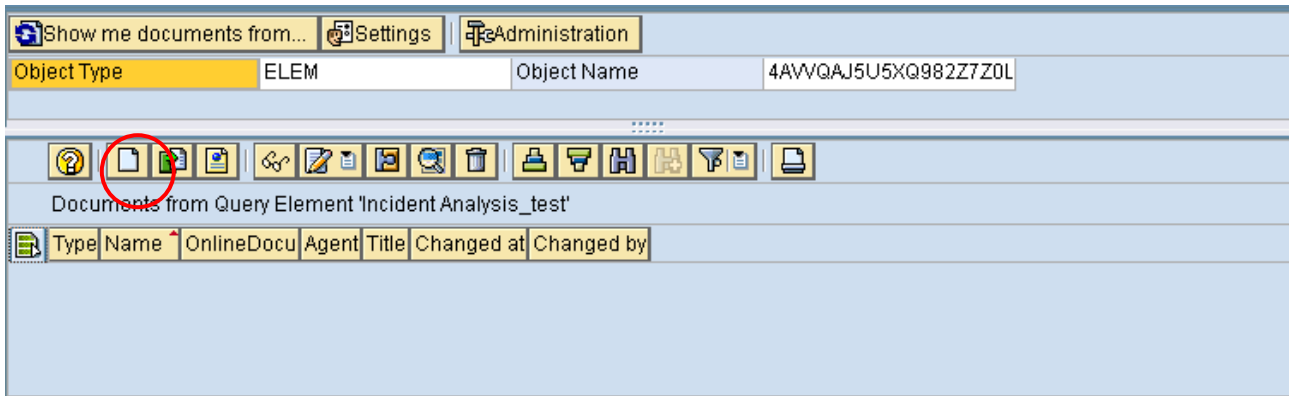
Linking any Document with a Web-Template

In this section we shall see a more general way of attaching documents with web-template. The process involves attaching a document to a query first and then using a web-item to display the attached document on web.

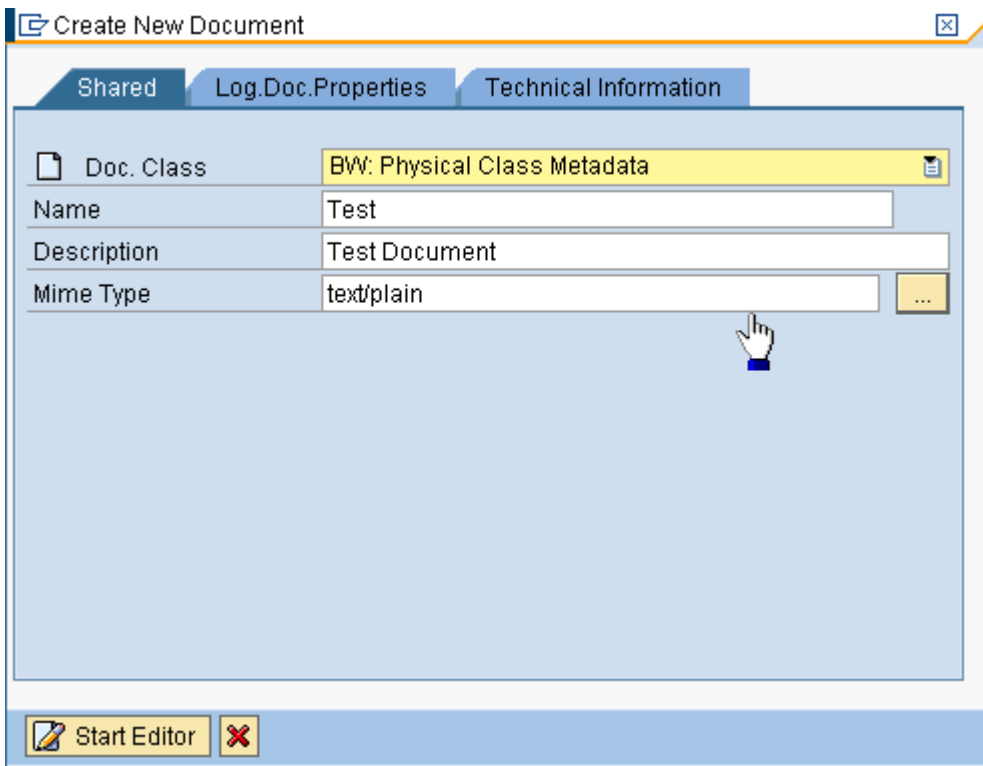
Step-1 Go to T-code **RSA1** and click on Documents.



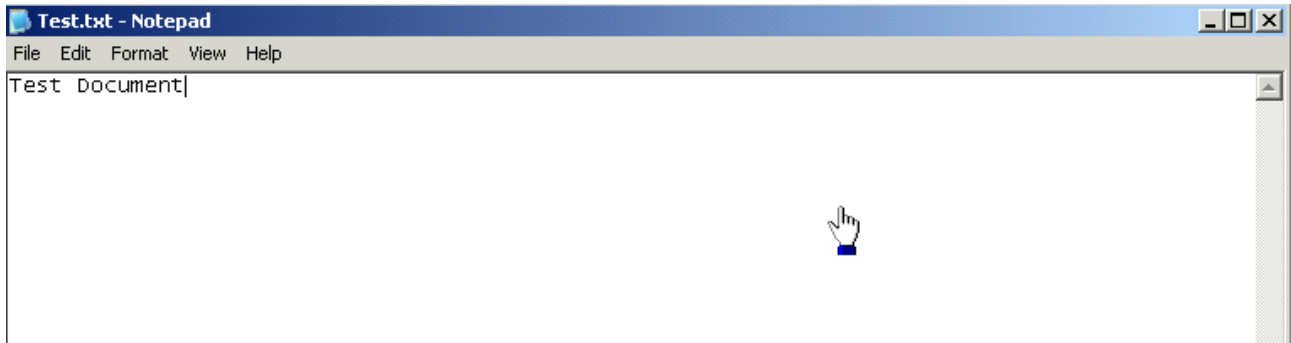
Step-2 Select Object Type as **ELEM** and Object Name is your query (use F4 help to select). Click on Create



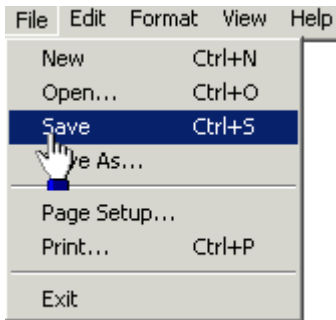
Step-3 The below pop-up appears. Enter the Name and Description of the document.



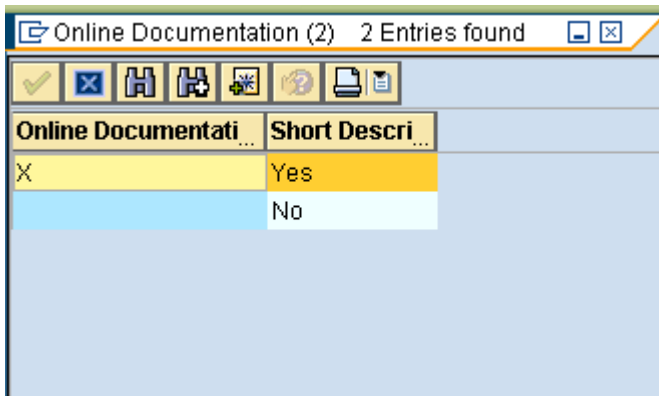
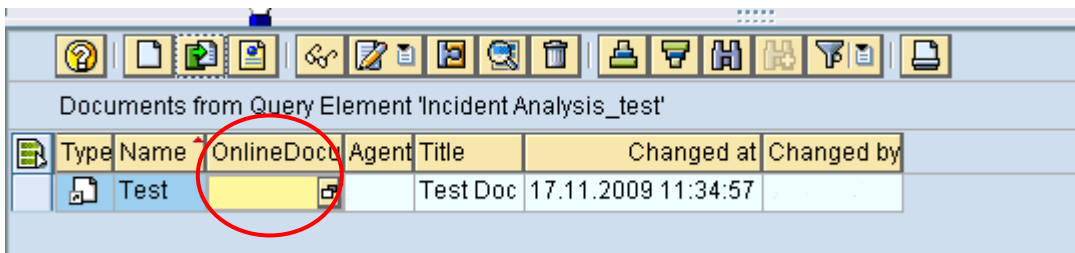
Step-4 Enter the text/information you wish to attach with the query for end-users.

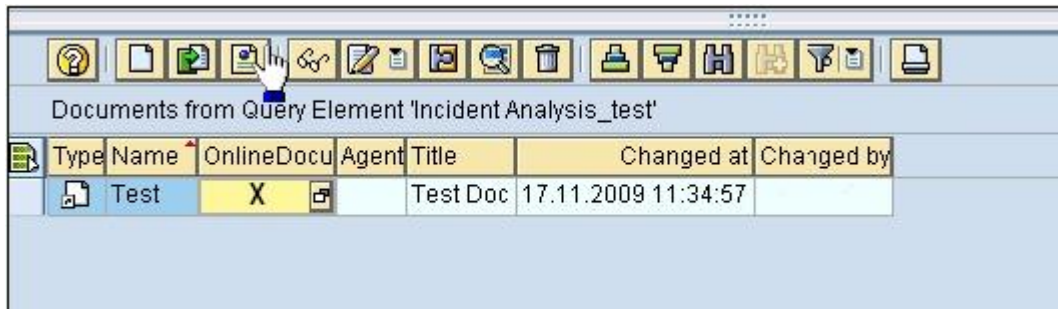


Step-5 Goto File->Save.

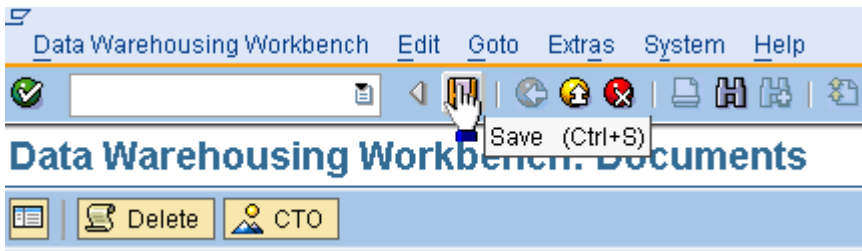


Step-6 The document is created. We now have to make it an online document so that we can see it on web. For that make the online Document Field as 'X'.



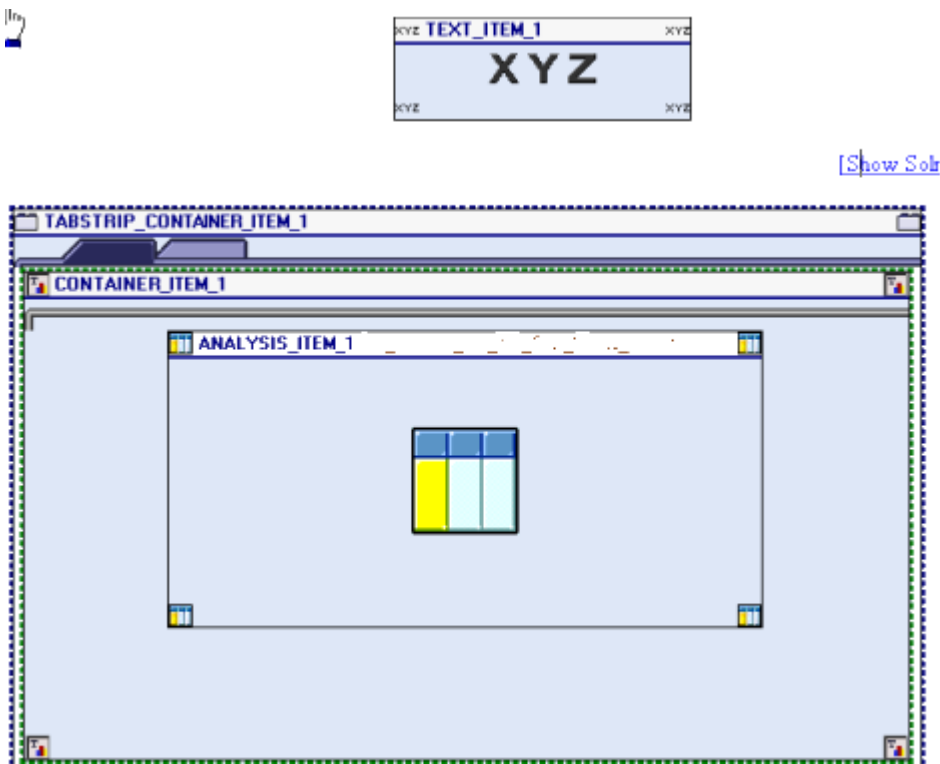


Step-7 Save the settings.

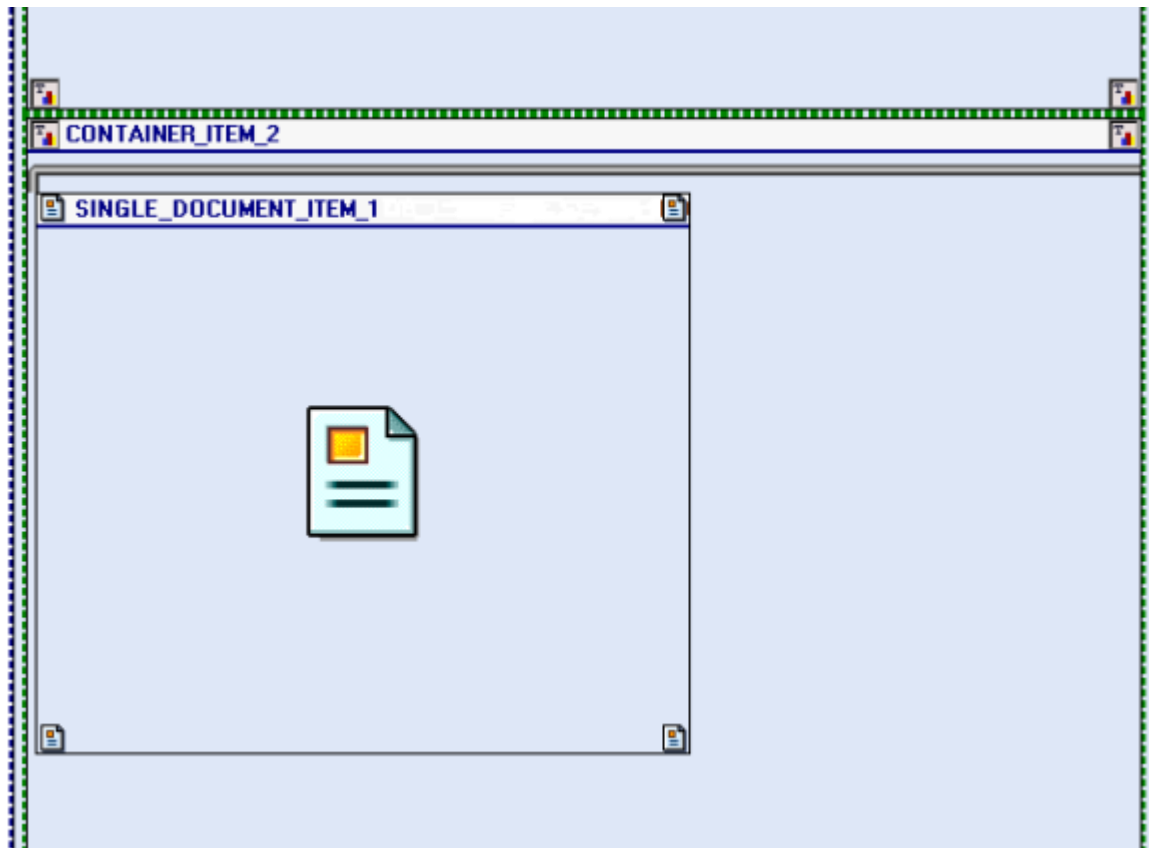
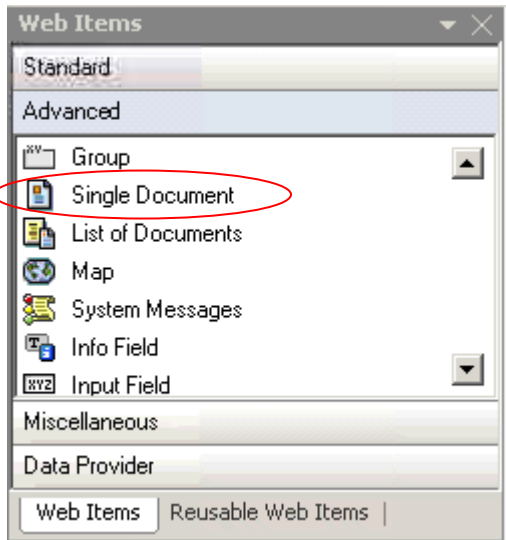


Till now we have attached a document with our Query. In order to have this document available with our web template based on the query, we need to select a web-item and customize it accordingly. We shall now learn the same.

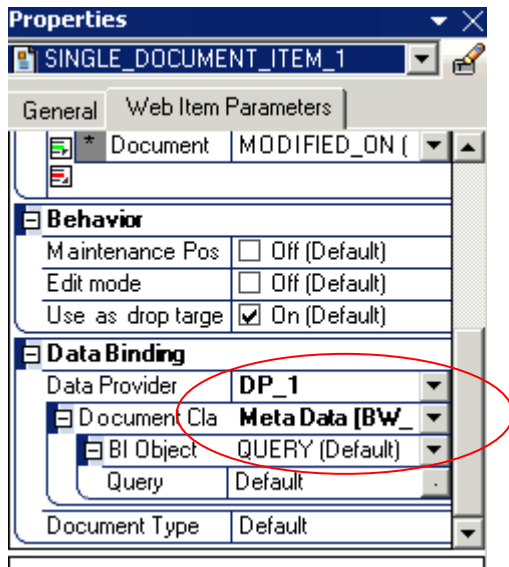
Step-8 Open the Web Application Designer and create a web-template. Use of Tab-Strip is recommended. In the first tab keep your analysis items or other items. The second tab is devoted to Query Documentation.



Step-9 In the second container drag the below 'Single Document' Web Item.



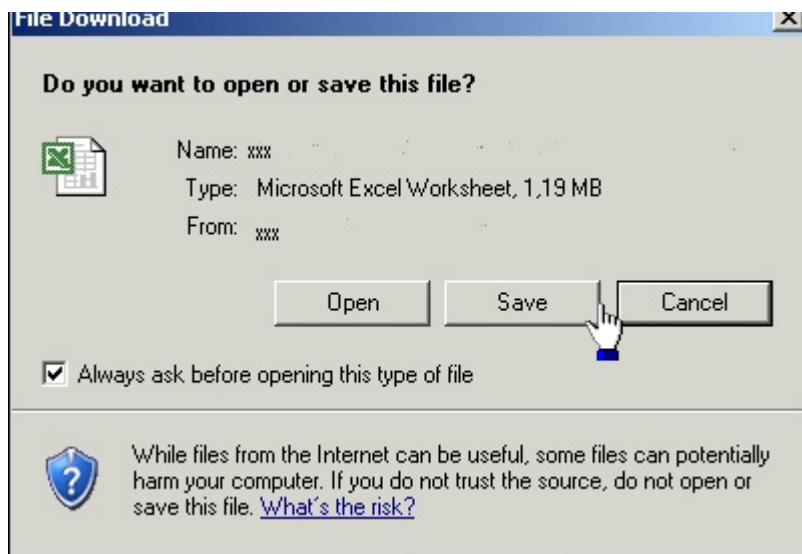
Step-10 Set the below data binding properties for the 'Single Document' web-item.



Step-11 Save your web-Template and execute.

Plant	Product Category		
	01		2
			2
	Result		4
Overall Result			4

Step-12 When we click on the documentation tab, we get the below pop-up.



This way user can check the document associated with the query and leverage the information.

Related Content

For more information, visit the [Business Intelligence homepage](#).

http://help.sap.com/saphelp_nw04/Helpdata/EN/83/54973910a9bc12e10000000a114084/content.htm

http://help.sap.com/saphelp_nw70/helpdata/en/2a/2da2394fbf4e6ae10000000a11402f/content.htm

http://help.sap.com/saphelp_nw04/helpdata/EN/dd/b2143b54afb405e10000000a114084/content.htm

Disclaimer and Liability Notice

This document may discuss sample coding or other information that does not include SAP official interfaces and therefore is not supported by SAP. Changes made based on this information are not supported and can be overwritten during an upgrade.

SAP will not be held liable for any damages caused by using or misusing the information, code or methods suggested in this document, and anyone using these methods does so at his/her own risk.

SAP offers no guarantees and assumes no responsibility or liability of any type with respect to the content of this technical article or code sample, including any liability resulting from incompatibility between the content within this document and the materials and services offered by SAP. You agree that you will not hold, or seek to hold, SAP responsible or liable with respect to the content of this document.